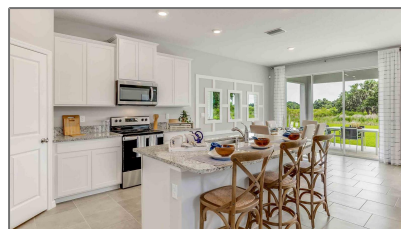
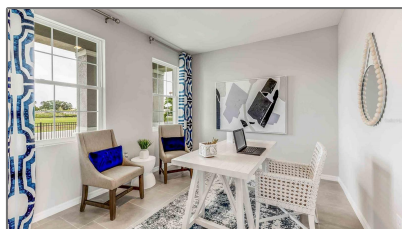


# Single Family Residence For Sale

3,316 Sqft - 9854 ROWING DALE BEND, WESLEY  
CHAPEL, Florida 33545



## Basic Details

Property Type:	Residential
Listing Type:	For Sale
Listing ID:	MFRT3521997
Price:	\$494,990
Bedrooms:	4
Bathrooms:	3
Living Area:	2,756 Sqft
Square Footage:	3,316 Sqft
Year Built:	2024
Lot Size:	0.14 Acre
Status:	Active
Days On Market:	21
✓ Minimum Lease Period:	7 Months

## Features

✓ Heating System:	Heat Pump, Central
✓ Cooling System:	Central Air
✓ Roof Deck:	Shingle
✓ Appliances:	Dishwasher, Microwave, Range
Garages:	0
✓ Exterior Features:	Irrigation System
Fireplaces Total:	0
✓ Flooring:	Carpet, Ceramic Tile
Garage Spaces:	2
✓ Interior Features:	Open Floorplan
✓ Laundry Features:	Laundry Room
✓ Lot Features:	Paved, Sidewalk
✓ New Construction:	1
Zoning:	MPUD
Pool Private:	1
Waterfront YN:	1

Address [Map](#)

Country:	USA
State:	FL
City:	WESLEY CHAPEL
Zipcode:	33545
Street:	ROWING DALE
Street Number:	9854
Street Suffix:	BEND
Floor Number:	0
Longitude:	W83° 42' 46.7"
Latitude:	N28° 18' 1.5"
Directions:	<b>From I-75, take the exit for Wesley Chapel Blvd/SR-54. Head east. Take a left on Curley Rd. Take a left on Overpass Rd into the community. Continue straight over Epperson Blvd. Take a right on Dolphin Bluff Blvd. The sales information center will be ahead to your right.</b>
Area:	33545 - Wesley Chapel
Subdivision:	EPPERSON RANCH

Agent [Info](#)



Bryan Rogers  
[🔗 holidayrealtyflorida.com](https://www.holidayrealtyflorida.com)  
[📞 321-278-5486](tel:321-278-5486)  
[✉ bryan@holidayrealtyflorida.com](mailto:bryan@holidayrealtyflorida.com)

