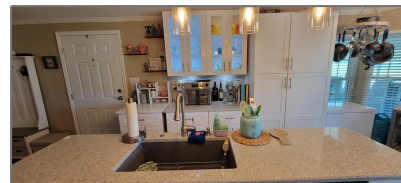


Manufactured Home - Post 1977 For Sale

1,700 Sqft - 2468 PEAVINE CIRCLE, LAKELAND,
Florida 33810



Basic Details

Property Type: **Residential**

Listing Type: **For Sale**

Listing ID: **MFRL4941916**

Price: **\$275,000**

Bedrooms: **3**

Bathrooms: **2**

Living Area: **1,700 Sqft**

Square Footage: **1,700 Sqft**

Year Built: **2008**

Lot Size: **0.10 Acre**

Status: **Active**

Days On Market: **35**

✓ Minimum Lease
Period:

1 Month

Features

✓ Heating System: Central, Electric

✓ Cooling System: Central Air

✓ Roof Deck: Shingle

✓ Appliances: Refrigerator,
Dishwasher, Dryer,
Washer, Disposal,
Electric Water Heater

Garages: **2**

✓ Carport Option: 1

✓ Exterior Features: Lighting, Irrigation
System

Fireplaces Total: **0**

✓ Flooring: Laminate, Vinyl

Garage Spaces: **0**

✓ Interior Features: Walk-in Closet(s), Ceiling
Fans(s), Split Bedroom,
Crown Molding, Open
Floorplan, L Dining

✓ Laundry Features: Inside

Pool Private: **1**

Waterfront YN: **1**

Address [Map](#)

Country:	USA
State:	FL
City:	LAKELAND
Zipcode:	33810
Street:	PEAVINE
Street Number:	2468
Street Suffix:	CIRCLE
Floor Number:	0
Longitude:	W83° 59' 37.5"
Latitude:	N28° 10' 51.6"
Directions:	Approximately 7 miles north of interstate 4. GO north on 98 to 10000 US HWY 98 N. Stop at guard gate. Access must be granted prior to showings. Stay on Big Cypress Blvd until Peavine until Peavine Trail. Take right. That ends at Peavine Circle. House is on your left.
Area:	33810 - Lakeland
Subdivision:	CYPRESS LAKES PH 11

Agent [Info](#)



Bryan Rogers
[🔗 holidayrealtyflorida.com](#)
[📞 321-278-5486](#)
[✉ bryan@holidayrealtyflorida.com](#)

